

TURBOWIN+ USER MANUAL:

PART 1

**SOFTWARE DOWNLOAD, INSTALLATION &
MINIMUM CONFIGURATION REQUIREMENTS**

Table of Contents

Table of Contents.....	1
Introduction	2
System Requirements	2
Upgrading an Existing Installation	3
Downloading Turbowin+.....	3
Installing Turbowin+	3
Create SOT-ID.....	5
Initial Setup	7
Entering Station Details.	9
Ship to Shore Data Format.....	10
Log File Settings	12
Minimum Configuration	13
Annex 1:	14

Introduction

1. These instructions refer to the installation of **TurboWin+** (hereafter referred to as **TW+**) This manual also describes the regular TW+ maintenance procedures during a ship inspection visit.
2. **TW+** is a user-friendly electronic logbook software developed as freeware by the Royal Netherlands Meteorological Institute (KNMI). The software is endorsed by the World Meteorological Organization (WMO) for use on voluntary observing ships and is developed with contributions from WMO and many national meteorological services. It can be used to log, code and send meteorological observations from ships.
3. Meteorological observations sent from ships and fixed sea stations are a substantial component of the World Weather Watch. Voluntary Observing Ships (VOS) are a key component of the Global Observing System and climate research. However, it was recognised that some of these observations were subject to keying and coding errors. TurboWin was developed to solve this problem. The user-friendly software automatically codes observations and contains over 200 built-in quality checks to minimise errors before transmission.

System Requirements

1. TW+ is available in various configurations to run on different operating systems:
 - TurboWin+ V4.0.0 JPMS (Windows 64 bit) [138 Mb*; no Java required]
 - TurboWin+ V4.0.0 JPMS (Windows 64 bit) [28 Mb**; no Java required]
 - TurboWin+ V4.0.1 (Windows 32 bit) [117 Mb; Java JRE 8 or higher required]
 - TurboWin+ V4.0.2 JPMS (Linux 64 bit) [149 Mb; no Java required]
 - TurboWin+ V3.3.0 (Linux 32 bit) [117 Mb; Java JRE 7 or higher required]

*all meteorological help files included

** meteorological help files via internet links
2. Minimum MS Windows requirements:
 - MS Windows XP/Vista/7/8.1/10.
 - High Colour (16-bits) or better screen setting
 - Screen resolution 600 x 800 (minimum)
 - 70 Mb available hard disk space (minimal install)
 - 510 Mb available hard disk space (full install)

3. The installation of **TW+** on a networked computer may require administrator privileges to ensure the installation, including the creation of desktop icons as described in this manual.
4. The screen images in this manual are used for illustration and may vary slightly depending on the version or operating system used.

Upgrading an Existing Installation

1. Previous versions of **TurboWin** should be **Uninstalled** prior to continuing with the installation of a newer version.

Downloading Turbowin+

1. TW+ is available for download from <http://projects.knmi.nl/turbowin/download.html>
2. There are several options available for either Windows or Linux machines. Some versions also require Java to be installed.
3. If you are unable to download the software, please contact your PMO who will be able to provide a version on a portable storage device.

Installing Turbowin+

1. Once the program has been downloaded, open the .exe file
2. The TW+ setup wizard (Figure 1) will open and prompt you to follow the on-screen instructions. Click **Next** to continue.

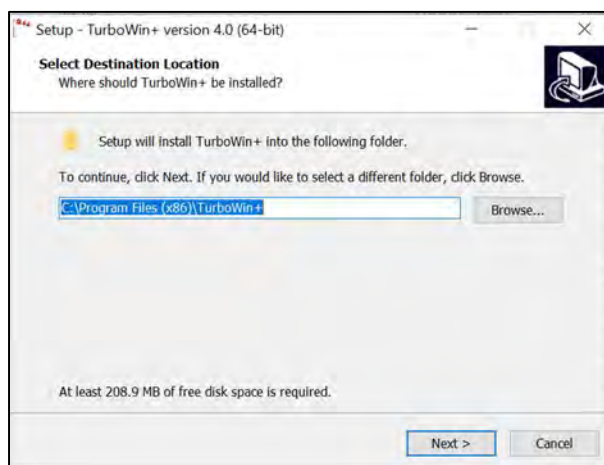


Figure 1: Installation wizard screen 1

- For a typical installation, please accept the default settings then click **Next** to proceed through the setup wizard (Figures 3&4).

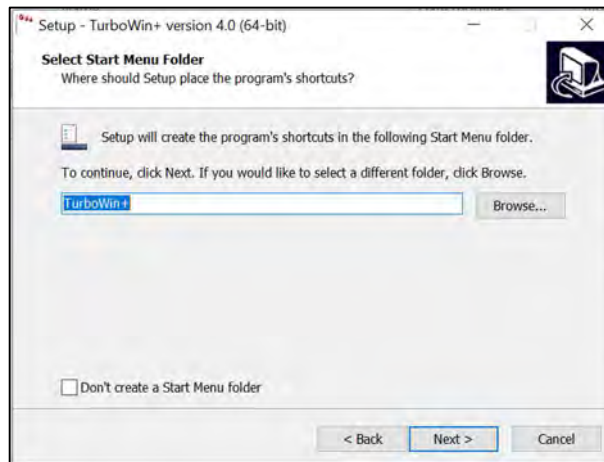


Figure 2: Installation wizard screen 2

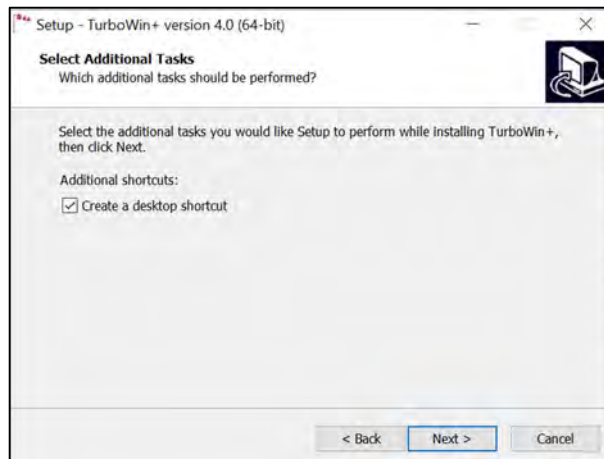


Figure 3: Installation wizard screen 3

- The ready to install box will appear (Figure 4). Click **Install** to begin the installation process. This may take several minutes.

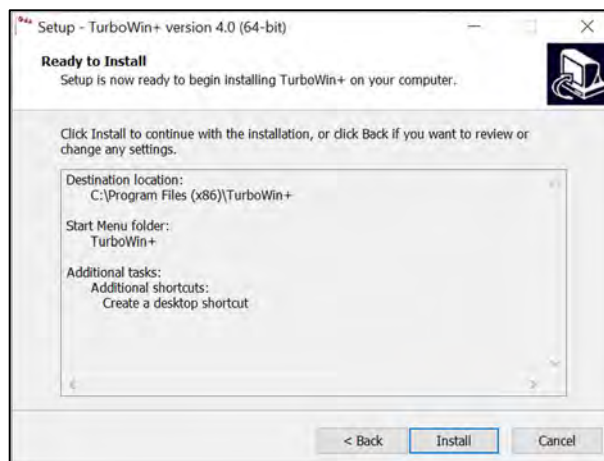
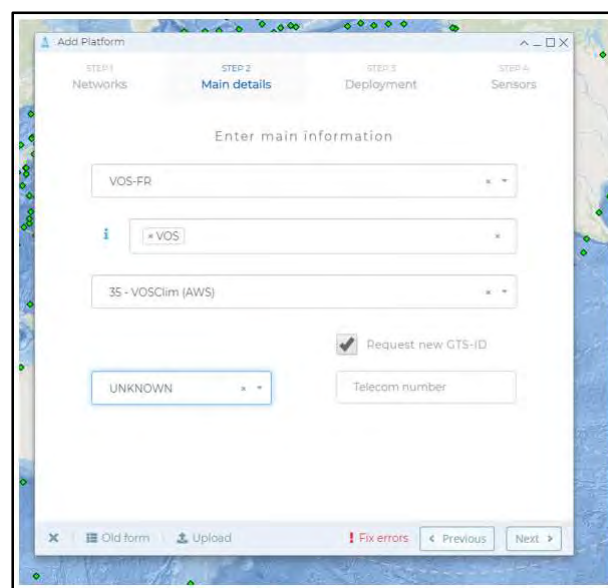


Figure 4: Installation wizard screen 4

- Once installation is complete, the Setup Complete box will appear. Tick the Launch Turbowin+ check box and then click **Finish**.

Create SOT-ID

- An SOT-ID is necessary for transmission of observations to the GTS.
- To obtain an SOT-ID, go to the OceanOPS website: <https://www.ocean-ops.org/>
- Log in (if required, request your credentials again with the corresponding button or ask the Ship-TC.
- Click on the Submit/Platform menu and select SOT.
- Enter the relevant details:
 - Program: VOS-XX where XX is your country code
 - Network: VOS
 - Class: NMHS recruited
- Tick the check box 'Request new GTS-ID' and then click Next (figure 5).



The screenshot shows a web browser window titled "Add Platform". The interface is divided into four steps: STEP 1: Networks, STEP 2: Main details (active), STEP 3: Deployment, and STEP 4: Sensors. The "Main details" section is titled "Enter main information" and contains the following fields:

- A dropdown menu with "VOS-FR" selected.
- A dropdown menu with "VOS" selected.
- A dropdown menu with "35 - VOSClm (AWS)" selected.
- A dropdown menu with "UNKNOWN" selected.
- A checkbox labeled "Request new GTS-ID" which is checked.
- An input field labeled "Telecom number" which is currently empty.

At the bottom of the form, there are several buttons: "Old form" (with a document icon), "Upload" (with a cloud icon), "Fix errors" (with a red exclamation mark icon), "Previous" (with a left arrow), and "Next" (with a right arrow).

Figure 5: Enter program details

- Skip the next page by clicking Next.
- Then enter the name of the ship. If the ship is not already in the database, follow the link for ship registration.
- To register a ship, enter the ship name, country of registration and ship type as a minimum (figure 6).

Register Ship

ICES Code:

IMO number:

Name:

Call Sign:

Country:

Type:

Figure 6: Register ship

10. Once registered, select the ship and the installation date then click Next (figure 7).

Add Platform

STEP 1 Networks | STEP 2 Main details | STEP 3 Deployment | STEP 4 Sensors

Enter deployment information

2019-12-12 11:51:31

Latitude Longitude

TAPORO 8

If ship is not found in list please [add it here](#)

Notify individuals concerned

Old form | Upload | Previous | Next

Figure 7: Select ship from database

11. Leave fields on this page blank and click Submit (figure 8).

Add Platform

STEP 1 Networks | STEP 2 Main details | STEP 3 Deployment | STEP 4 Sensors

Add sensors (optional)

Sensor model - type in here a model name, type or manufacturer

Data link URL

Serial number Height

Add to list

Sensor model	Serial N°	Data URL	Height
List of added sensors			

Old form | Upload | Previous | Submit

Figure 8: Submit SOT-ID request

12. An SOT-ID will be generated for the station and will be displayed in the ref./SOT-ID field (figure 9).

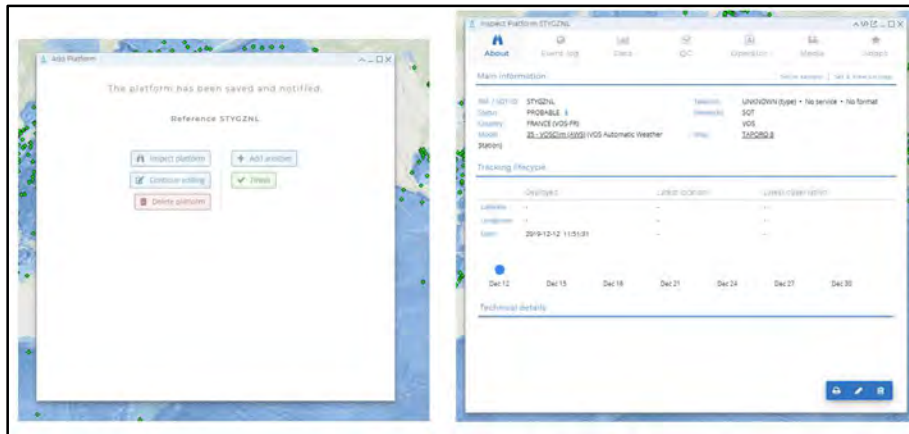


Figure 9: SOT-ID

Initial Setup

1. Double click on the TW+ **desktop icon** shown in Figure 10. Alternatively, select TW+ from the program group on the **Start** menu.



Figure 10: TurboWin+ desktop icon

2. The message box shown in Figure 11 will be displayed each time TW+ is started, until the **Station Data** is set.

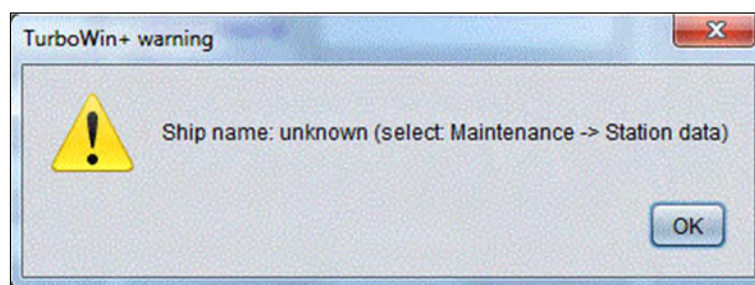


Figure 11: TurboWin+ warning - station data missing

3. Confirm that the date and time are correct (Figure 12). The PC can be set to either Local Time (LT) or Coordinated Universal Time (UTC).

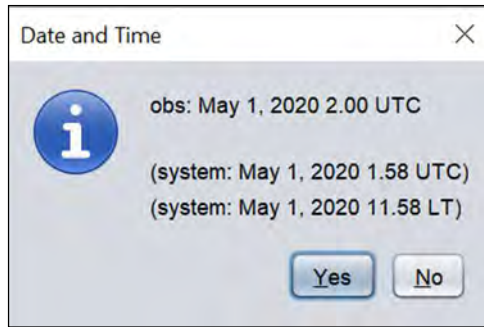


Figure 12:Date and Time check

Entering Station Details.

1. From the menu bar, select **Maintenance >> Station data** (Figure 13). Enter the administrator password (see **Annex 1**) to login.

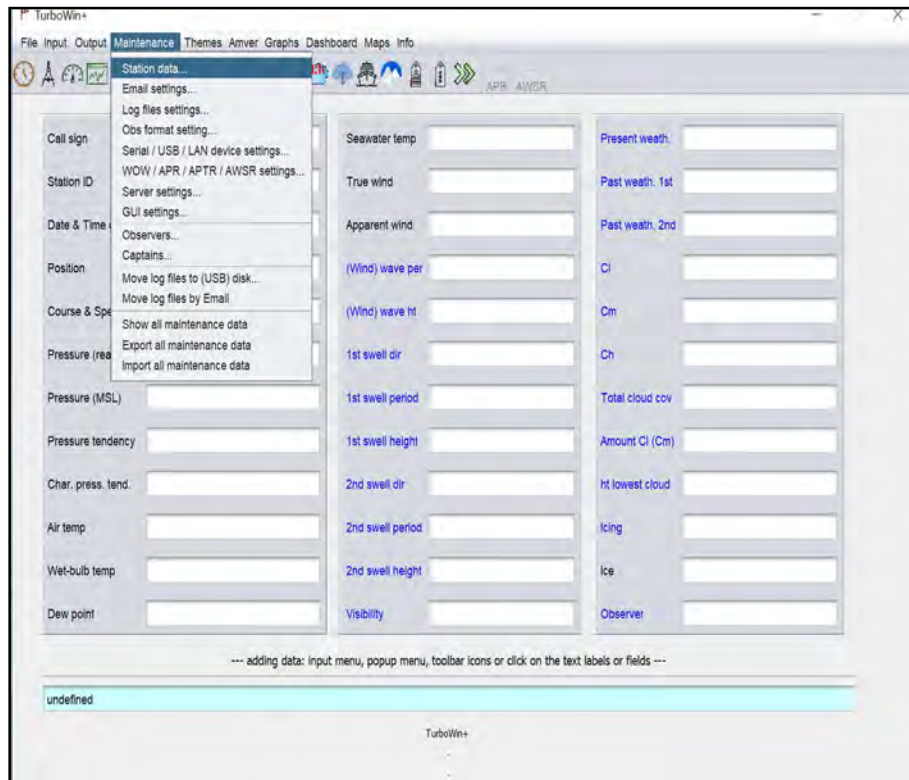


Figure 13: Maintenance menu - Station Data

2. The window shown in **Figure 14** will be displayed.

Figure 14: Station details form

3. Enter all station details from the ship's particulars; including Station ID (SOT-ID), country of recruitment and equipment metadata specific to the type of installation on the ship.
4. Ensure that you select either 'Yes' or 'No' for the field '**does the reading indicate MSL pressure**'. Check with your PMO to confirm which selection applies.

Ship to Shore Data Format

1. From the menu bar, select **Maintenance >> Obs Format Setting** (Figure 15). Enter the administrator password (see Annex 1) to login.

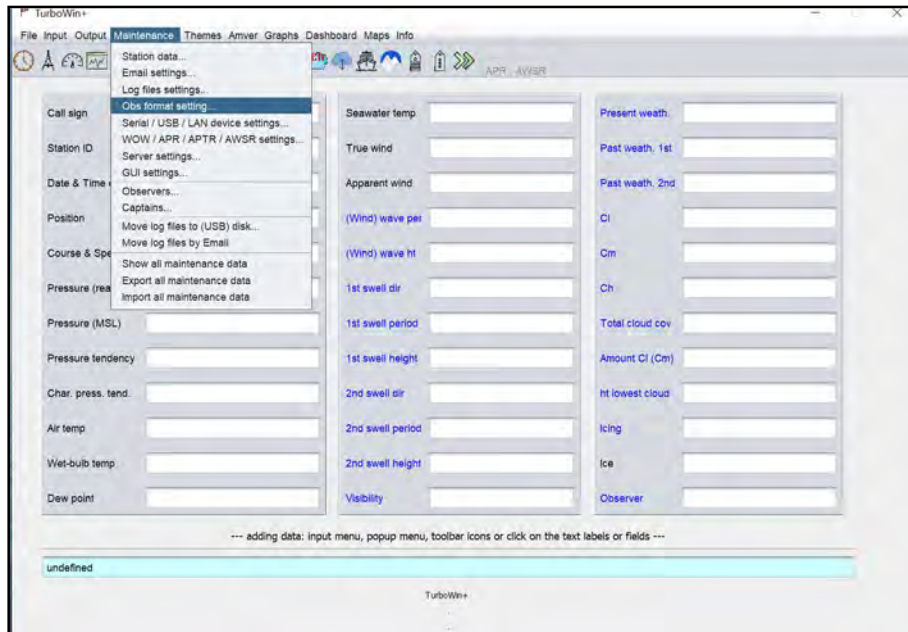


Figure 15: Obs Format Setting from the Maintenance menu

- Then select the required data format as directed by your National Meteorological Service (Figure 16).

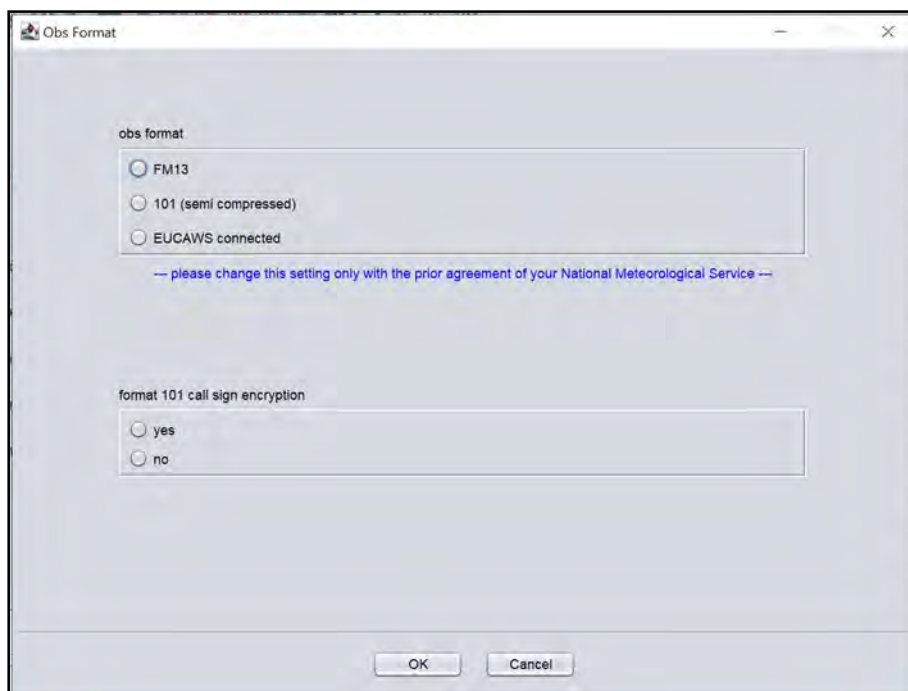


Figure 16: Obs format setting

- If selecting Format 101 (semi compressed), you will also need to indicate whether call sign encryption is being used. Consult with your National Meteorological Service for details. In addition to this, you will need to specify whether the Format 101 message is included in the body of an email or as an attachment. This can be done on the Email Settings page.

Log File Settings

1. From the menu bar, select **Maintenance >> Log File Settings** (Figure 17). Enter the administrator password (see **Annex 1**) to login.

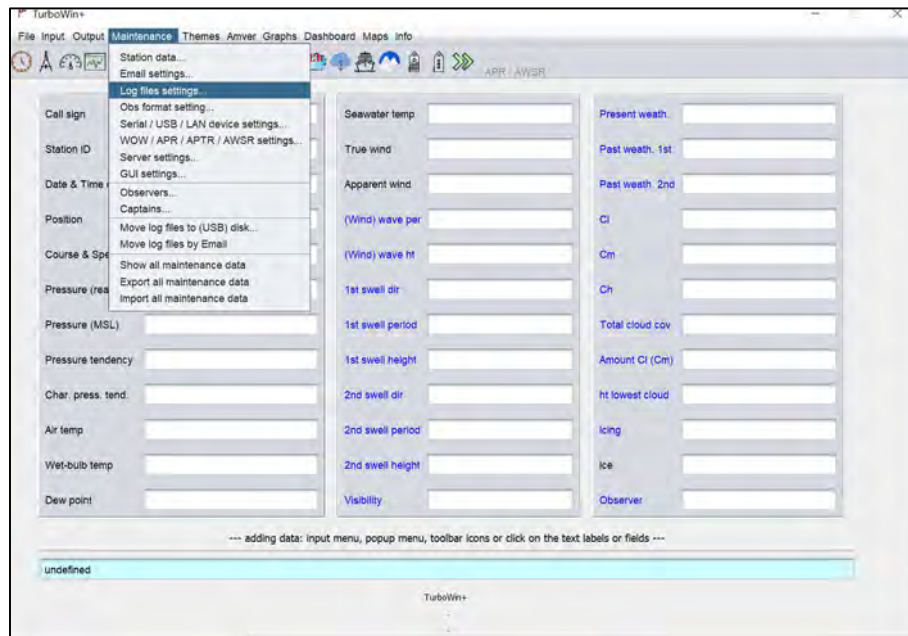


Figure 17: Log File Settings from the Maintenance menu

2. You do not need to make any changes in the configuration. Log files should be downloaded by the Port Meteorological Officer on a routine basis (preferably every 6 months or less).

3. Take note of the instructions provided for downloading log file (Figure 18).

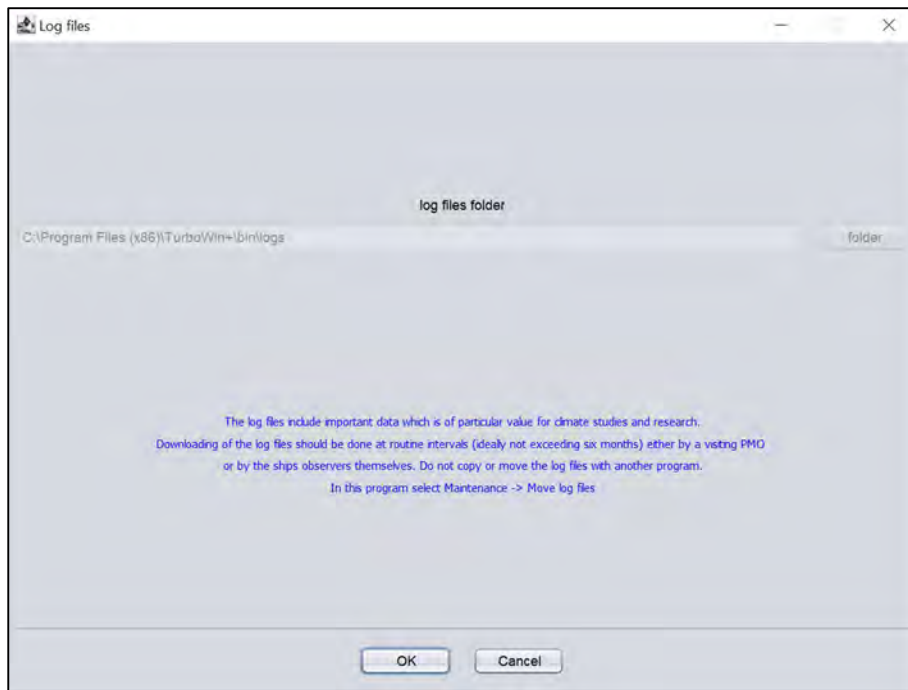


Figure 18: Log Files folder location and download instructions

4. PMOs have the option to setup the transfer of log files via email. To do this, go to the Email Settings page and enter the required email address into the appropriate field.
5. Once configured, log files can be transferred by going to the Maintenance menu and selecting 'Move log files by email'.
6. Alternatively, log files can be moved to a portable storage device by selecting 'Move log files to (USB) disk...!'.

Minimum Configuration

1. Restart the application for the above changes to take effect.
2. You have now met the minimum requirements for TW+ setup and can proceed to recording your first weather observation.

Annex 1:

The Turbowin+ administrator password is **JWS01**